

# solid timber door range

- Premium hand-made doors by skilled craftsman
- All timber hand selected and colour matched
- Kiln-dried and moisture tested to stop movement
- Made-to-measure
- A standard range of reliable timbers to suit any design or style
- Available any size up to 2400 x 1200mm, some up to 2600mm high

Visit the Parkwood Doors website  
to view the entire Solid Timber  
entry door range.



# parkwood's solid timber entrance doors combine strength and elegance

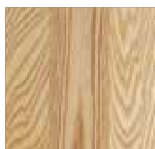
Premium front doors hand-crafted to the finest quality by skilled tradespeople. These entry doors are custom-made to almost any size.

Designed for use in weather-protected entrance ways, Parkwood Solid Timber doors are all made in New Zealand by local craftsmen from the finest quality timbers. Manufactured with wider stiles and rails, and raised and fielded panels, they combine strength with elegance. Western Red Cedar is the most popular timber for a stain quality door. Other options, including paint quality timbers, can be selected from the standard range of timbers below.



## Western Red Cedar

Drawn from the beautiful Canadian forests, this product is in hot demand worldwide. Its rich red colour, superior stability and variety of grains and shades has caught the eye of the international stage. Although it is still a favourite for timber joinery, it is now a premium timber and this is reflected in the price.



## American White Ash

The light-coloured hardwood that is reasonably close to American White Oak. It has creamy white to light brown heartwood with white coloured sapwood, with uniform texture. White Ash's beautiful grain and versatility bring the much sought after natural charm of timber to many high-end residential and commercial projects.



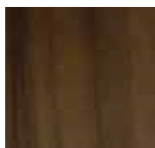
## Rosewood

A hardwood that is reliable for joinery! It ranges in darker colours from yellow-brown to gold and red-brown. It has remarkable physical beauty and an amazing range of uses and durability, matched only by timbers which are either more expensive or which do not possess the same physical attraction or working qualities.



## Radiata Pine

Parkwood uses pine that is precision sawn and kiln dried, and then dressed on all four sides. The result is a dimensionally stable, clear, wood product. The trees from which Clears are made are carefully selected, managed, and processed to achieve a product that is reliable and strong, but that has high visual and aesthetic appeal. (For oversize doors, Vulcan is recommended for stability).



## Vulcan

Stability. Resistance. Durability.  
A timber that will never move.

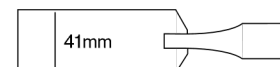
Chocolate brown depths and even grain all finished nicely with engineered lamination lines. This exciting new brand is a breakthrough for the timber world. It is thermally modified in specialist computer-monitored kilns. The individual pores of the timber no longer absorb moisture, meaning it will no longer move or change like other natural products. This patent-protected product has a laminated structure for even greater strength and is FSC certified.



Paint quality E9

## Thicker for additional strength

Parkwood entrance doors are 41mm thick. This gives additional strength to the door and a satisfying solid feel with a surer shut.



## Moisture tested & seasoned

At Parkwood we use low temperature kilns for drying timber with a very high volume of airflow. We then fillet stack timber for 20-30 days to let any moisture spread out evenly over the board to avoid further movement within the timber later on. All our timber then goes through a moisture-testing machine to check that the moisture percentage is right.

## Doors of all sizes

We can manufacture all sizes of door up to 2400 x 1200mm.

When selecting your door manufacturer or supplier you should be fully aware of the problems that can come up if the door design has been ill conceived or wrongly constructed.

Visit the Parkwood Doors website to view the entire Solid Timber entry door range.



For glass options, see page 57.

# solid timber entrance doors

Visit the Parkwood Doors website to view the entire Solid Timber entry door range.



Key:

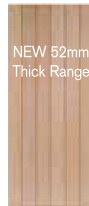
- Can only fit Pivot HAL985-400SSS
- Can fit all Pivots (further detail, see page 102)
- 50mm thick (All other exterior doors 41mm thick)

E1



Code	Available timbers
PQCE1	Paint quality Cedar
SQCE1	Stain quality Cedar
PQVE1	Paint quality Vulcan
SQVE1	Stain quality Vulcan

E1-52  
No Rails



Code	Available timbers
PQCE152	Paint quality Cedar
SQCE152	Stain quality Cedar
PQVE152	Paint quality Vulcan
SQVE152	Stain quality Vulcan

AR 10 TGV



Code	Available timbers
PQCAR10V	Paint quality Cedar
SQCAR10V	Stain quality Cedar
PQVAR10V	Paint quality Vulcan
SQVAR10V	Stain quality Vulcan

AR 11 TGV



Code	Available timbers
PQCAR11V	Paint quality Cedar
SQCAR11V	Stain quality Cedar
PQVAR11V	Paint quality Vulcan
SQVAR11V	Stain quality Vulcan

AR 12 TGV



Code	Available timbers
PQCAR12V	Paint quality Cedar
SQCAR12V	Stain quality Cedar
PQVAR12V	Paint quality Vulcan
SQVAR12V	Stain quality Vulcan

AR 13 TGV



Code	Available timbers
PQCAR13V	Paint quality Cedar
SQCAR13V	Stain quality Cedar
PQVAR13V	Paint quality Vulcan
SQVAR13V	Stain quality Vulcan

AR 14 TGV



Code	Available timbers
PQCAR14V	Paint quality Cedar
SQCAR14V	Stain quality Cedar
PQVAR14V	Paint quality Vulcan
SQVAR14V	Stain quality Vulcan

E1 WITH RAILS



Code	Available timbers
PQPE1WR	Paint quality Pine
PQCE1WR	Paint quality Cedar
SQCE1WR	Stain quality Cedar
PQVE1WR	Paint quality Vulcan
SQVE1WR	Stain quality Vulcan
ROE1WR	Rosewood
AAE1WR	American White Ash

E2



Code	Available timbers
PQPE2	Paint quality Pine
PQCE2	Paint quality Cedar
SQCE2	Stain quality Cedar
PQVE2	Paint quality Vulcan
SQVE2	Stain quality Vulcan
ROE2	Rosewood
AAE2	American White Ash

E2 NO STILES (clashed 2 edges)



Code	Available timbers
PQPE2NS	Paint quality Pine
PQCE2NS	Paint quality Cedar
SQCE2NS	Stain quality Cedar
PQVE2NS	Paint quality Vulcan
SQVE2NS	Stain quality Vulcan
ROE2NS	Rosewood
AAE2NS	American White Ash

AR44 (exterior) (TGV 41mm thick)



Code	Available timbers
PQPAR44EXT	Paint quality Pine
PQCAR44EXT	Paint quality Cedar
SQCAR44EXT	Stain quality Cedar
PQVAR44EXT	Paint quality Vulcan
SQVAR44EXT	Stain quality Vulcan
ROAR44EXT	Rosewood
AAAR44EXT	American White Ash

E17



Code	Available timbers
PQPE17	Paint quality Pine
PQCE17	Paint quality Cedar
SQCE17	Stain quality Cedar
PQVE17	Paint quality Vulcan
SQVE17	Stain quality Vulcan
ROE17	Rosewood
AAE17	American White Ash

\* No double glazing

E18



Code	Available timbers
PQPE18	Paint quality Pine
PQCE18	Paint quality Cedar
SQCE18	Stain quality Cedar
PQVE18	Paint quality Vulcan
SQVE18	Stain quality Vulcan
ROE18	Rosewood
AAE18	American White Ash

E19



Code	Available timbers
PQPE19	Paint quality Pine
PQCE19	Paint quality Cedar
SQCE19	Stain quality Cedar
PQVE19	Paint quality Vulcan
SQVE19	Stain quality Vulcan
ROE19	Rosewood
AAE19	American White Ash

\* No double glazing

E20



Code	Available timbers
PQPE20	Paint quality Pine
PQCE20	Paint quality Cedar
SQCE20	Stain quality Cedar
PQVE20	Paint quality Vulcan
SQVE20	Stain quality Vulcan
ROE20	Rosewood
AAE20	American White Ash

\* No double glazing

E21



Code	Available timbers
PQPE21	Paint quality Pine
PQCE21	Paint quality Cedar
SQCE21	Stain quality Cedar
PQVE21	Paint quality Vulcan
SQVE21	Stain quality Vulcan
ROE21	Rosewood
AAE21	American White Ash

\* No double glazing

- AR TGV Doors have TGV boards Ex150 x 50mm
- Available any size up to 2400 x 1200mm unless stated otherwise
- For glass options, see page 57



# solid timber entrance doors

Hardware Key:

- Can only fit Pivot HAL985-400SSS
- Can fit all Pivots (further detail, see page 102)
- 50mm thick (All other exterior doors 41mm thick)

E3

Code	Available timbers
PQPE3	Paint quality Pine
PQCE3	Paint quality Cedar
SQCE3	Stain quality Cedar
PQVE3	Paint quality Vulcan
SQVE3	Stain quality Vulcan
ROE3	Rosewood
AAE3	American White Ash

E4

Code	Available timbers
PQPE4	Paint quality Pine
PQCE4	Paint quality Cedar
SQCE4	Stain quality Cedar
PQVE4	Paint quality Vulcan
SQVE4	Stain quality Vulcan
ROE4	Rosewood
AAE4	American White Ash

E8 O/T

Code	Available timbers
PQPE8OT	Paint quality Pine
PQCE8OT	Paint quality Cedar
SQCE8OT	Stain quality Cedar
PQVE8OT	Paint quality Vulcan
SQVE8OT	Stain quality Vulcan
ROE8OT	Rosewood
AAE8OT	American White Ash

E8S Sidelight

Code	Available timbers
PQPE8S	Paint quality Pine
PQCE8S	Paint quality Cedar
SQCE8S	Stain quality Cedar
PQVE8S	Paint quality Vulcan
SQVE8S	Stain quality Vulcan
ROE8S	Rosewood
AAE8S	American White Ash

• Min width 375mm

E4 O/T

Code	Available timbers
PQPE4OT	Paint quality Pine
PQCE4OT	Paint quality Cedar
SQCE4OT	Stain quality Cedar
PQVE4OT	Paint quality Vulcan
SQVE4OT	Stain quality Vulcan
ROE4OT	Rosewood
AAE4OT	American White Ash

• Leadlight available see page 57

E4S Sidelight

Code	Available timbers
PQPE4S	Paint quality Pine
PQCE4S	Paint quality Cedar
SQCE4S	Stain quality Cedar
PQVE4S	Paint quality Vulcan
SQVE4S	Stain quality Vulcan
ROE4S	Rosewood
AAE4S	American White Ash

• Min width 375mm

E9

Code	Available timbers
PQPE9	Paint quality Pine
PQCE9	Paint quality Cedar
SQCE9	Stain quality Cedar
PQVE9	Paint quality Vulcan
SQVE9	Stain quality Vulcan
ROE9	Rosewood
AAE9	American White Ash

• No double glazing

E9S

Code	Available timbers
PQPE9S	Paint quality Pine
PQCE9S	Paint quality Cedar
SQCE9S	Stain quality Cedar
PQVE9S	Paint quality Vulcan
SQVE9S	Stain quality Vulcan
ROE9S	Rosewood
AAE9S	American White Ash

• No double glazing  
• Min width 375mm

E5

Code	Available timbers
PQPE5	Paint quality Pine
PQCE5	Paint quality Cedar
SQCE5	Stain quality Cedar
PQVE5	Paint quality Vulcan
SQVE5	Stain quality Vulcan
ROE5	Rosewood
AAE5	American White Ash

E6

Code	Available timbers
PQPE6	Paint quality Pine
PQCE6	Paint quality Cedar
SQCE6	Stain quality Cedar
PQVE6	Paint quality Vulcan
SQVE6	Stain quality Vulcan
ROE6	Rosewood
AAE6	American White Ash

E11

Code	Available timbers
PQPE11	Paint quality Pine
PQCE11	Paint quality Cedar
SQCE11	Stain quality Cedar
PQVE11	Paint quality Vulcan
SQVE11	Stain quality Vulcan
ROE11	Rosewood
AAE11	American White Ash

E12

Code	Available timbers
PQPE12	Paint quality Pine
PQCE12	Paint quality Cedar
SQCE12	Stain quality Cedar
PQVE12	Paint quality Vulcan
SQVE12	Stain quality Vulcan
ROE12	Rosewood
AAE12	American White Ash

• Leadlight available see page 57  
• Minimum Door width 810mm

E7

Code	Available timbers
PQPE7	Paint quality Pine
PQCE7	Paint quality Cedar
SQCE7	Stain quality Cedar
PQVE7	Paint quality Vulcan
SQVE7	Stain quality Vulcan
ROE7	Rosewood
AAE7	American White Ash

E8

Code	Available timbers
PQPE8	Paint quality Pine
PQCE8	Paint quality Cedar
SQCE8	Stain quality Cedar
PQVE8	Paint quality Vulcan
SQVE8	Stain quality Vulcan
ROE8	Rosewood
AAE8	American White Ash

E13

Code	Available timbers
PQPE13	Paint quality Pine
PQCE13	Paint quality Cedar
SQCE13	Stain quality Cedar
PQVE13	Paint quality Vulcan
SQVE13	Stain quality Vulcan
ROE13	Rosewood
AAE13	American White Ash

• Minimum Door width 810mm  
• No double glazing  
• Leadlight available see page 57

E15

Code	Available timbers
PQPE15	Paint quality Pine
PQCE15	Paint quality Cedar
SQCE15	Stain quality Cedar
PQVE15	Paint quality Vulcan
SQVE15	Stain quality Vulcan
ROE15	Rosewood
AAE15	American White Ash

• Minimum Door width 810mm  
• E15 Has black rubber bead to hold the glass in  
• No double glazing  
• Leadlight available see page 57

Exterior Profiles  
Exterior premium entrance



- Available any size up to 2400 x 1200mm unless stated otherwise
- For glass options, see page 57



# solid timber entrance doors

Key:

- Can only fit Pivot HAL985-400SSS
- Can fit all Pivots (further detail, see page 102)
- 50mm thick (All other exterior doors 41mm thick)

E14



Code	Available timbers
PQPE14	Paint quality Pine
PQCE14	Paint quality Cedar
SQCE14	Stain quality Cedar
PQVE14	Paint quality Vulcan
SQVE14	Stain quality Vulcan
ROE14	Rosewood
AAE14	American White Ash

- Minimum Door width 810mm
- Leadlight available (see page 57)
- No double glazing

E14S Sidelight



Code	Available timbers
PQPE14S	Paint quality Pine
PQCE14S	Paint quality Cedar
SQCE14S	Stain quality Cedar
PQVE14S	Paint quality Vulcan
SQVE14S	Stain quality Vulcan
ROE14S	Rosewood
AAE14S	American White Ash

- Minimum Door width 375mm
- No double glazing

E24



Code	Available timbers
PQPE24	Paint quality Pine
PQCE24	Paint quality Cedar
SQCE24	Stain quality Cedar
PQVE24	Paint quality Vulcan
SQVE24	Stain quality Vulcan
ROE24	Rosewood
AAE24	American White Ash

E16



Code	Available timbers
PQPE16	Paint quality Pine
PQCE16	Paint quality Cedar
SQCE16	Stain quality Cedar
PQVE16	Paint quality Vulcan
SQVE16	Stain quality Vulcan
ROE16	Rosewood
AAE16	American White Ash

FP1



Code	Available timbers
PQFP1	Paint quality Pine
PQCF1	Paint quality Cedar
SQCF1	Stain quality Cedar
PQVF1	Paint quality Vulcan
SQVF1	Stain quality Vulcan
ROF1	Rosewood
AAF1	American White Ash

FP6



Code	Available timbers
PQFP6	Paint quality Pine
PQCF6	Paint quality Cedar
SQCF6	Stain quality Cedar
PQVF6	Paint quality Vulcan
SQVF6	Stain quality Vulcan
ROF6	Rosewood
AAF6	American White Ash

- No double glazing

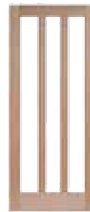
FP12



Code	Available timbers
PQFP12	Paint quality Pine
PQCF12	Paint quality Cedar
SQCF12	Stain quality Cedar
PQVF12	Paint quality Vulcan
SQVF12	Stain quality Vulcan
ROF12	Rosewood
AAF12	American White Ash

- No double glazing

EF3



Code	Available timbers
PQEF3	Paint quality Pine
PQCE3	Paint quality Cedar
SQCE3	Stain quality Cedar
PQVE3	Paint quality Vulcan
SQVE3	Stain quality Vulcan
ROE3	Rosewood
AAE3	American White Ash

Exterior Profiles  
Exterior premium entrance



- Available any size up to 2400 x 1200mm unless stated otherwise
- For glass options, see page 57

F8



Code	Available timbers
PQPF8	Paint quality Pine
PQCF8	Paint quality Cedar
SQCF8	Stain quality Cedar
PQVF8	Paint quality Vulcan
SQVF8	Stain quality Vulcan
ROF8	Rosewood
AAF8	American White Ash

- No double glazing

F9



Code	Available timbers
PQPF9	Paint quality Pine
PQCF9	Paint quality Cedar
SQCF9	Stain quality Cedar
PQVF9	Paint quality Vulcan
SQVF9	Stain quality Vulcan
ROF9	Rosewood
AAF9	American White Ash

- No double glazing

F10



Code	Available timbers
PQPF10	Paint quality Pine
PQCF10	Paint quality Cedar
SQCF10	Stain quality Cedar
PQVF10	Paint quality Vulcan
SQVF10	Stain quality Vulcan
ROF10	Rosewood
AAF10	American White Ash

- No double glazing

F12



Code	Available timbers
PQPF12	Paint quality Pine
PQCF12	Paint quality Cedar
SQCF12	Stain quality Cedar
PQVF12	Paint quality Vulcan
SQVF12	Stain quality Vulcan
ROF12	Rosewood
AAF12	American White Ash

- No double glazing

Ext. 1 Lite



Code	Available timbers
PQPE1L	Paint quality Pine
PQCE1L	Paint quality Cedar
SQCE1L	Stain quality Cedar
PQVE1L	Paint quality Vulcan
SQVE1L	Stain quality Vulcan
ROE1L	Rosewood
AAE1L	American White Ash

Ext. 2 Lite



Code	Available timbers
PQPE2L	Paint quality Pine
PQCE2L	Paint quality Cedar
SQCE2L	Stain quality Cedar
PQVE2L	Paint quality Vulcan
SQVE2L	Stain quality Vulcan
ROE2L	Rosewood
AAE2L	American White Ash

Ext. 3 Lite



Code	Available timbers
PQPE3L	Paint quality Pine
PQCE3L	Paint quality Cedar
SQCE3L	Stain quality Cedar
PQVE3L	Paint quality Vulcan
SQVE3L	Stain quality Vulcan
ROE3L	Rosewood
AAE3L	American White Ash

Ext. 4 Lite



Code	Available timbers
PQPE4L	Paint quality Pine
PQCE4L	Paint quality Cedar
SQCE4L	Stain quality Cedar
PQVE4L	Paint quality Vulcan
SQVE4L	Stain quality Vulcan
ROE4L	Rosewood
AAE4L	American White Ash

F6



Code	Available timbers
PQPF6	Paint quality Pine
PQCF6	Paint quality Cedar
SQCF6	Stain quality Cedar
PQVF6	Paint quality Vulcan
SQVF6	Stain quality Vulcan
ROF6	Rosewood
AAF6	American White Ash

- No double glazing

## solid timber exterior doors

Key:

- Can only fit Pivot HAL985-400SSS
- Can fit all Pivots (further detail, see page 102)
- 50mm thick (All other exterior doors 41mm thick)

FIG 5A



Code	Available timbers	●
PQFIG5A	Paint quality Pine	
PQCFIG5A	Paint quality Cedar	
SQCFIG5A	Stain quality Cedar	
PQVFIG5A	Paint quality Vulcan	
SQVFIG5A	Stain quality Vulcan	
ROFIG5A	Rosewood	
AAFIG5A	American White Ash	

BRACED & LEDGED



Code	Available timbers	●
PQPBACE	Paint quality Pine	
PQCBACE	Paint quality Cedar	
SQCBACE	Stain quality Cedar	
PQVBACE	Paint quality Vulcan	
SQVBACE	Stain quality Vulcan	
ROBACE	Rosewood	
AABACE	American White Ash	

FIG 5



Code	Available timbers	●
PQFIG5	Paint quality Pine	
PQCFIG5	Paint quality Cedar	
SQCFIG5	Stain quality Cedar	
PQVFIG5	Paint quality Vulcan	
SQVFIG5	Stain quality Vulcan	
ROFIG5	Rosewood	
AAFIG5	American White Ash	

Paint quality doors have exterior grade ply that is vee grooved. Stain quality doors have TGV boards ex100x25

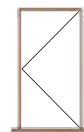
Visit the Parkwood Doors website to view the entire Solid Timber entry door range.



- Available any size up to 2400 x 1200mm unless stated otherwise

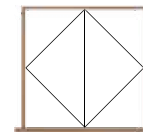
## timber frames

FRAME A



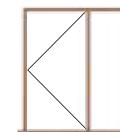
Code	Available timbers
PQPFRAA	Paint quality Pine
PQVFRAA	Paint quality Vulcan
ROFRAA	Rosewood

FRAME B



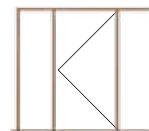
Code	Available timbers
PQPFRAA	Paint quality Pine
PQVFRAA	Paint quality Vulcan
ROFRAA	Rosewood

FRAME C



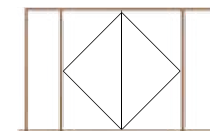
Code	Available timbers
PQPFRAA	Paint quality Pine
PQVFRAA	Paint quality Vulcan
ROFRAA	Rosewood

FRAME D



Code	Available timbers
PQPFRAA	Paint quality Pine
PQVFRAA	Paint quality Vulcan
ROFRAA	Rosewood

FRAME E



Code	Available timbers
PQPFRAE	Paint quality Pine
PQVFRAE	Paint quality Vulcan
ROFRAE	Rosewood

- Jamb width - 145 x 42mm (Ex 150 x 50)
- Ask for our standard frame order sheet
- No lock hardware to doors included
- All jambs come with a rubber weather seal around
- 90 x 20 facings
- 100 x 75 Hinges SS included

## additional services

Drilling	
Standard locks	TIOLK
Special locks	TIOLKS
4 Point locks	TIOLK4P
Machine for Raven Seal	TIORP8
Pairs	
Rebated pair only	TIORB
Machine for flushbotts	TIORB5308
Machine for rebate kit	TIORBKT

### Entrance frames - pre-hung doors and sidelight

Complement the timeless tradition of your timber doors with a natural timber frame. Parkwood will pre-hang your doors and sidelight in an exterior frame and deliver them ready for quick installation.

### Exterior weather seal

All Parkwood doors use a seal around their frames as demonstrated in the diagram. The seals protect the doors from the weather, water and even insects. They also stop the doors from banging loudly against the door frame when it closes. For more sealing options contact your local Parkwood retailer.

## glass options

Parkwood can pre-fix your glass at the factory so there is no need to fit glass on site. We can arrange almost any type of glass you want and our range of leadlights will make your front door or feature interior door stand out. For a full range of glass options please contact your local Parkwood dealer.

Double glazing is available on all timber doors apart from the styles noted with exceptions.



Clear



Green tint



Bronze tint



Grey tint



Cathedral



Stipolite



Etchlite / Opal



Translucent laminate



Double glazed clear



Satinlyte

## leadlight

To go with the E4 O/T or E4S



PZ101

To go with the E14 or E14S



PZ108

To go with the E15



P25

To go with the E13



P21

P23

## finishing your solid timber door

It is critical that timber doors are pre-finished with the correct products to ensure they are completely sealed to prevent moisture absorption.

Timber is made up of tiny pores that can absorb moisture in the air. When they do this, they can expand. As the humidity drops or temperatures increase, these pores dry out again causing the timber to shrink. In doing so it will often twist, crack and change shape.

To prevent this, a film forming product must be used. A form filling product will line the pores of the timber and seal it completely from the outside elements. This is opposed to a stain or oil that simply sits on the outside of the pores. Film forming products will last longer and require less maintenance.

Parkwood can help by adding a seal coat which will give the door temporary protection for five days while on site - please ask if you want this option added - code PASIKKCOAT1.

To fully finish the door, Parkwood recommend using any of the following brands:

- Sikkens
- Cabots Exterior Vanish

Your door will also come with finishing instructions and tips. Check our website for further information.





## characteristics of a wooden front door

Timber is made up of a combination of porous cells which when dry (ideally 12-14% for the manufacture of doors) the cells become hollow. This leaves room for moisture to absorb into the timber and if not sealed properly problems will eventually arise. As the timber dries out moisture will penetrate causing the timber to move thus bowing or causing twist in the door or even splitting.

All oils and penetrating stains are not sealers! They line the inside of a cell and form a thin coat over the face until the heat from the sun draws the stain to the surface of the timber allowing moisture to penetrate. Then the problems start.

**Parkwood recommend film-forming products. Examples of brands are Sikkens, Intergrain & Cabots.**

An easy option is the DIY product - Parkwood Signature Kit - one includes all the needed products and equipment in one simple kit.

Code HAPASKLO



These brands of sealers cover and protect the timber of a front door in a far superior way to other forms of finishing and will not allow moisture or the outdoor elements to penetrate through. This keeps problems, like bowing, cracks and splitting, at bay.

This product is applied to each door consisting of three coats. The base coat being a transparent primer - is water repellent and protects timber

from effects of UV exposure. The top coats (stain sheen finish) give a flexible coating, which allows the door to give natural movement without breaking the seal.



Base Coat



Second Coat



Top Coat

Besides giving a far better finish than hand brushing, this finish is 100% backed by Parkwood Products in their Guarantee of Quality.

Further recommendations on your solid timber entrance doors, including the positioning of the front door entrance, should be followed to ensure its longevity. These can be found on Parkwood's Warranty page.



## staining or oiling front entrance doors

There have been numerous articles or recommendations on staining timber doors, some of which are disputable. It is important to select a front door finish that allows for movement of the timber as well as maintenance and preservation of the exterior door long-term.

Let's critique some of the finishes available on the market today.

<b>Urethane Finishes</b> ❌ <ul style="list-style-type: none"> <li>Product failures due to lack of UV protection.</li> <li>Hard shell finish, no flexibility.</li> <li>Non-micro porous, which does not allow substrate to breath, so moisture behind the polyurethane causes it to blister and finally flake off.</li> <li>Requires the entry door to have rework and major restoration after 12-18 months.</li> </ul> <p>Parkwood would not recommend urethanes for front doors, without the addition of UV absorbing chemicals at prohibitively expensive concentrations.</p>	<b>Penetrating Stain or low-build semi-transparent finishes</b> ❌ <ul style="list-style-type: none"> <li>Product failure due to weather by erosion – once this has occurred water resistance is lost leading to moisture uptake of timber results in cracking and splitting.</li> <li>Renowned for high instances of mould growth.</li> <li>Generally require recoating approximately every 12-18 months.</li> </ul> <p>These finishes form a very thin film on the surface of the timber and can only be regarded as temporary wood protection agents.</p>
<b>Natural Oils</b> ❌ <ul style="list-style-type: none"> <li>Product failures due to oils inclination to migrate under head back to the surface of the timber and weather away.</li> <li>Some unmodified oils are actually a good source for mould and lichen</li> <li>Generally require recoating approximately every 7-10 months.</li> </ul> <p>The use of vegetables oils e.g. linseed oil for finishing wooden entrance doors is not recommended.</p>	<b>Film Forming Transparent Finishes</b> ✅ <ul style="list-style-type: none"> <li>No product breakdown or discolouration (silvering) due to high UV protection.</li> <li>Surface showing no signs of cracking or flaking (due to flexibility of coating) micro porous coating.</li> <li>Water repellence is excellent.</li> <li>High quality look due to excellent film build</li> <li>Generally re top-coated after approximately 3 years in high sun areas</li> </ul>

Recently developed alkyl resins incorporate a greater flexibility and UV light resistance than earlier products and promising results have been obtained from exterior weathering trials.

All of the above are the result of trials taken by BRANZ in November 1998 and confirms that for exterior entrance doors a firm forming product is by far the best to use.

Check out our knowledge centre for more information

